

Overall Performance

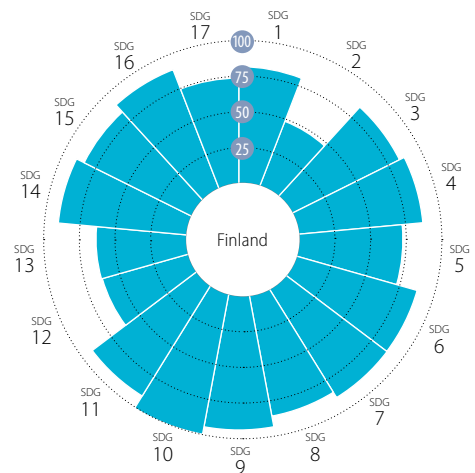
Index score



SDG Rank

Finland
1 /34

Performance by SDG



SDG Dashboards and Trends

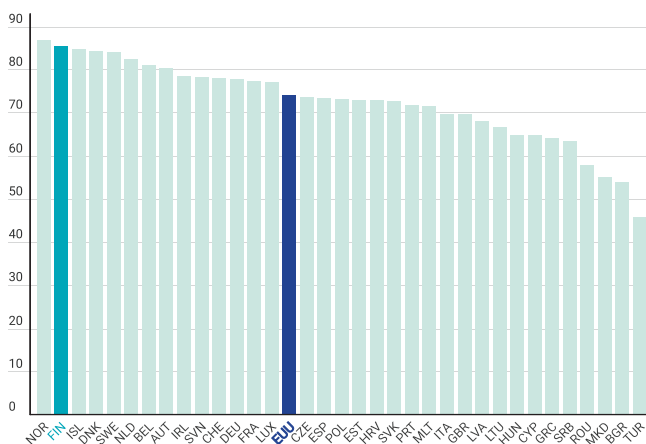


■ Major challenges
 ■ Significant challenges
 ■ Challenges remain
 ■ SDG achieved
 ■ Information unavailable
↓ Decreasing
 → Stagnating
 ↗ Moderately improving
 ↑ On track or maintaining SDG achievement
 ● Information unavailable

Notes: The full title of Goal 2 "Zero Hunger" is "End hunger, achieve food security and improved nutrition and promote sustainable agriculture".
 The full title of each SDG is available here: <https://sustainabledevelopment.un.org/topics/sustainabledevelopmentgoals>

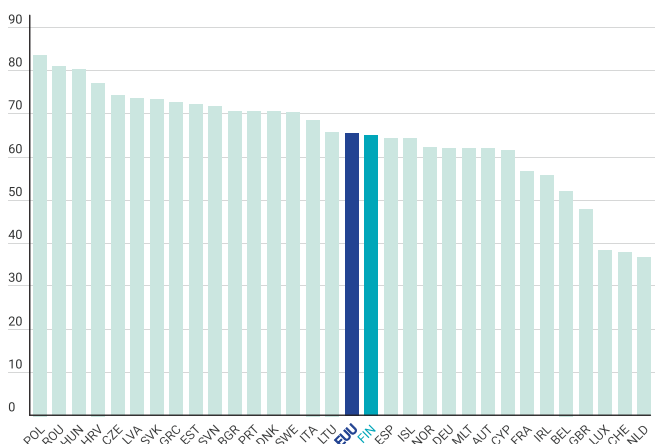
Leave No One Behind Index

100 (best) to 0 (worst)



Spillover Index

100 (best) to 0 (worst)



Notes: The full title of Goal 2 "Zero Hunger" is "End hunger, achieve food security and improved nutrition and promote sustainable agriculture". The full title of each SDG is available at: <https://sustainabledevelopment.un.org/topics/sustainabledevelopmentgoals>. Detailed results and methodology available online at <https://www.sdginde.org/EU>

SDG1 – No Poverty

| | Value | Year | Rating | Trend |
|---|-------|------|--------|-------|
| People at risk of income poverty after social transfers (%) | 12.2 | 2020 | ● | ↑ |
| Severely materially deprived people (%) | 2.6 | 2020 | ● | ↑ |
| Poverty headcount ratio at \$5.50/day (%) | 0.2 | 2021 | ● | ↑ |

SDG2 – Zero Hunger

| | | | | |
|--|-------|------|---|---|
| Prevalence of obesity, BMI ≥ 30 (% of adult population) | 20.9 | 2019 | ● | ↓ |
| Human Trophic Level (best 2–3 worst) | 2.57 | 2017 | ● | ↓ |
| Yield gap closure (%) | 51.6 | 2015 | ● | ● |
| Gross nitrogen balance on agricultural land (kg/hectare) | 51.1 | 2017 | ● | ↓ |
| Ammonia emissions from agriculture (kg/hectare) | 12.6 | 2018 | ● | ↑ |
| Exports of pesticides banned in the EU (kg per 1,000 population) | 361.5 | 2019 | ● | ● |

SDG3 – Good Health and Well-Being

| | | | | |
|--|-------|------|---|---|
| Life expectancy at birth (years) | 82.2 | 2020 | ● | ↑ |
| Gap in life expectancy at birth among regions (years) | 2.4 | 2019 | ● | ↑ |
| Population with good or very good perceived health (% of population aged 16 or over) | 69.9 | 2020 | ● | ↑ |
| Gap in self-reported health, by income (p.p.) | 25.3 | 2020 | ● | → |
| Gap in self-reported unmet need for medical examination and care, by income (p.p.) | 4.4 | 2020 | ● | ↓ |
| New reported cases of tuberculosis (per 100,000 population) | 4.7 | 2019 | ● | ↑ |
| Standardised preventable and treatable mortality (per 100,000 population aged less than 75) | 230.2 | 2018 | ● | ↑ |
| Suicide rate (per 100,000 population) | 14.4 | 2018 | ● | ↓ |
| Age-standardised death rate attributable to household air pollution and ambient air pollution (per 100,000 population) | 7 | 2016 | ● | ● |
| Mortality rate, under-5 (per 1,000 live births) | 2.4 | 2019 | ● | ↑ |
| People killed in road accidents (per 100,000 population) | 3.8 | 2019 | ● | ↑ |
| Surviving infants who received 2 WHO-recommended vaccines (%) | 91 | 2019 | ● | ↑ |
| Population engaging in heavy, episodic drinking at least once a week (%) | 11.0 | 2014 | ● | ● |
| Smoking prevalence (%) | 15 | 2020 | ● | ↑ |
| People covered by health insurance for a core set of services (%) | 100.0 | 2020 | ● | ↑ |
| Share of total health spending financed by out-of-pocket payments (%) | 22.2 | 2019 | ● | ↑ |
| Subjective Wellbeing (average ladder score, worst 0–10 best) | 7.8 | 2021 | ● | ↑ |
| Individuals that use the internet to make appointments with a practitioner (%) | 53 | 2020 | ● | ↑ |

SDG4 – Quality Education

| | | | | |
|--|-------|------|---|---|
| Participation in early childhood education (% of children between age of 3 and starting age of compulsory primary education) | 88.8 | 2019 | ● | ↑ |
| Early leavers from education and training (% of population aged 18 to 24) | 8.2 | 2020 | ● | ↑ |
| PISA score (worst 0–600 best) | 516.3 | 2018 | ● | ↑ |
| Underachievers in science (% of population aged 15) | 12.9 | 2018 | ● | ↑ |
| Variation in science performance explained by students' socio-economic status (%) | 10.5 | 2018 | ● | ↑ |
| Tertiary educational attainment (% of population aged 25 to 34) | 43.8 | 2020 | ● | ↑ |
| Adult participation in learning (%) | 27.3 | 2020 | ● | ↑ |

SDG5 – Gender Equality

| | | | | |
|--|------|------|---|---|
| Unadjusted gender pay gap (% of gross male earnings) | 16.6 | 2019 | ● | ↗ |
| Gender employment gap (p.p.) | 2.9 | 2020 | ● | ↑ |
| Population inactive due to caring responsibilities (% of population aged 20 to 64) | 11.6 | 2020 | ● | ↑ |
| Seats held by women in national parliaments (%) | 46.0 | 2020 | ● | ↑ |
| Positions held by women in senior management positions (%) | 35.1 | 2020 | ● | ↑ |
| Proportion of ICT specialists that are women (%) | 23.3 | 2020 | ● | → |

SDG6 – Clean Water and Sanitation

| | | | | |
|---|------|------|---|---|
| Population having neither a bath, nor a shower, nor indoor flushing toilet in their household (%) | 0.2 | 2020 | ● | ↑ |
| Population connected to at least secondary wastewater treatment (%) | 85.0 | 2018 | ● | ↑ |
| Freshwater abstraction (% of long-term average available water) | 0.6 | 2017 | ● | ↑ |
| Scarce water consumption embodied in imports (m ³ /capita) | 23.6 | 2013 | ● | ↑ |
| Population using safely managed water services (%) | 99.6 | 2020 | ● | ↑ |
| Population using safely managed sanitation services (%) | 84.1 | 2020 | ● | → |

SDG7 – Affordable and Clean Energy

| | | | | |
|--|------|------|---|---|
| Population unable to keep home adequately warm (%) | 1.8 | 2020 | ● | ↑ |
| Share of renewable energy in gross final energy consumption (%) | 43.1 | 2019 | ● | ↑ |
| CO ₂ emissions from fuel combustion per electricity output (MtCO ₂ /TWh) | 0.6 | 2019 | ● | ↑ |

SDG8 – Decent Work and Economic Growth

| | | | | |
|---|--------|------|---|---|
| Protection of fundamental labour rights (worst 0–1 best) | 0.86 | 2020 | ● | ↑ |
| Gross disposable income (€/capita) | 25,912 | 2019 | ● | ↑ |
| Youth not in employment, education or training (NEET) (% of population aged 15 to 29) | 10.3 | 2020 | ● | ↑ |
| Unemployment Rate (% labour force) | 7.8 | 2020 | ● | ↑ |

SDG8 – (continued)

| | Value | Year | Rating | Trend |
|---|-------|------|--------|-------|
| People killed in accidents at work (per 100,000 population) | 1.0 | 2018 | ● | ↑ |
| In work at-risk-of-poverty rate (%) | 3.1 | 2020 | ● | ↑ |
| Fatal work-related accidents embodied in imports (per 100,000 population) | 0.9 | 2015 | ● | ↑ |

SDG9 – Industry, Innovation and Infrastructure

| | | | | |
|---|-------|------|---|---|
| Gross domestic expenditure on R&D (% of GDP) | 2.8 | 2019 | ● | ↑ |
| R&D personnel (% of active population) | 1.9 | 2019 | ● | ↑ |
| Patent applications to the European Patent Office (per 1,000,000 population) | 342.0 | 2020 | ● | ↑ |
| Households with broadband access (%) | 96 | 2020 | ● | ↑ |
| Gap in internet access, urban vs rural areas (p.p.) | 4 | 2020 | ● | ↑ |
| Individuals aged 55 to 74 years old who have basic or above basic digital skills (%) | 55 | 2019 | ● | ↑ |
| Logistics performance index: Quality of trade and transport-related infrastructure (worst 1–5 best) | 4.0 | 2018 | ● | ↑ |
| The Times Higher Education Universities Ranking: Average score of top 3 universities (worst 0–100 best) | 53.8 | 2021 | ● | ● |
| Scientific and technical journal articles (per 1,000 population) | 1.9 | 2018 | ● | ↑ |

SDG10 – Reduced Inequalities

| | | | | |
|------------------|------|------|---|---|
| Gini Coefficient | 26.5 | 2020 | ● | ↑ |
| Palma ratio | 0.95 | 2018 | ● | ↑ |

SDG11 – Sustainable Cities and Communities

| | | | | |
|--|------|------|---|---|
| Urban population without access to green urban areas in their neighbourhood (%) | 0.7 | 2018 | ● | ↑ |
| Overcrowding rate among people living with below 60% of median equivalized income (%) | 20.8 | 2020 | ● | ↑ |
| Recycling rate of municipal waste (%) | 43.5 | 2019 | ● | ↑ |
| Population living in a dwelling with a leaking roof, damp walls, floors or foundation or rot in window frames or floor (%) | 4.5 | 2020 | ● | ↑ |
| Exposure to air pollution: PM _{2.5} in urban areas (µg/m ³) | 5.1 | 2019 | ● | ↑ |

SDG12 – Responsible Consumption and Production

| | | | | |
|--|-------|------|---|---|
| Circular material use rate (%) | 6.3 | 2019 | ● | ↓ |
| Gross value added in environmental goods and services sector | 5.7 | 2018 | ● | ↑ |
| Production-based SO ₂ emissions (kg/capita) | 105.6 | 2015 | ● | → |
| Imported SO ₂ emissions (kg/capita) | 42.3 | 2015 | ● | ↓ |
| Production-based emissions of reactive nitrogen (kg/capita) | 15.9 | 2015 | ● | ↓ |
| Imported emissions of reactive nitrogen (kg/capita) | 9.9 | 2015 | ● | ↓ |

SDG13 – Climate Action

| | | | | |
|--|-----|------|---|---|
| CO ₂ emissions from fossil fuel combustion and cement production (tCO ₂ /capita) | 7.5 | 2019 | ● | → |
| CO ₂ emissions embodied in imports (tCO ₂ /capita) | 2.6 | 2015 | ● | → |
| CO ₂ emissions embodied in fossil fuel exports (kg/capita) | 0.1 | 2020 | ● | ● |

SDG14 – Life Below Water

| | | | | |
|---|------|------|---|---|
| Bathing sites of excellent quality (%) | 86.4 | 2019 | ● | ↑ |
| Fish caught from overexploited or collapsed stocks (% of total catch) | 3.1 | 2018 | ● | ↑ |
| Fish caught by bottom trawling or dredging (%) | NA | NA | ● | ● |
| Fish caught that are then discarded (%) | 0.2 | 2018 | ● | ↑ |
| Marine biodiversity threats embodied in imports (per million population) | 0.1 | 2018 | ● | ● |
| Mean area that is protected in marine sites important to biodiversity (%) | 60.7 | 2020 | ● | → |

SDG15 – Life on Land

| | | | | |
|--|------|------|---|---|
| Mean area that is protected in terrestrial sites important to biodiversity (%) | 71.7 | 2020 | ● | → |
| Mean area that is protected in freshwater sites important to biodiversity (%) | 75.8 | 2020 | ● | → |
| Biochemical oxygen demand in rivers (mg O ₂ /litre) | NA | NA | ● | ● |
| Nitrate in groundwater (mg NO ₃ /litre) | NA | NA | ● | ● |
| Red List Index of species survival (worst 0–1 best) | 0.99 | 2021 | ● | ↑ |
| Terrestrial and freshwater biodiversity threats embodied in imports (per million population) | 2.0 | 2018 | ● | ● |

SDG16 – Peace, Justice and Strong Institutions

| | | | | |
|--|------|------|---|---|
| Death rate due to homicide (per 100,000 population) | 1.2 | 2018 | ● | ↑ |
| Population reporting crime in their area (%) | 7.0 | 2020 | ● | ↑ |
| Gap in population reporting crime in their area, by income (p.p.) | 6.7 | 2020 | ● | ↓ |
| Access to justice (worst 0–1 best) | 0.71 | 2020 | ● | ↑ |
| Timeliness of administrative proceedings (worst 0–1 best) | 0.82 | 2020 | ● | ↑ |
| Constraints on government power (worst 0–1 best) | 0.92 | 2020 | ● | ↑ |
| Corruption Perceptions Index (worst 0–100 best) | 85 | 2020 | ● | ↑ |
| Unsentenced detainees (% of prison population) | 19.0 | 2018 | ● | ↑ |
| Exports of major conventional weapons (TIV constant 1990 million USD per 100,000 population) | 0.60 | 2020 | ● | ● |
| Press Freedom Index (best 0–100 worst) | 7.0 | 2021 | ● | ↑ |

SDG17 – Partnerships for the Goals

| | | | | |
|--|------|------|---|---|
| Official development assistance (% of GNI) | 0.47 | 2020 | ● | ↓ |
| Shifted profits of multinationals (billion USD) | 5.2 | 2018 | ● | ↑ |
| Corporate Tax Haven Score (best 0–100 worst) | 60 | 2021 | ● | ● |
| Statistical Performance Index (worst 0–100 best) | 88.5 | 2019 | ● | ↑ |